

# SPR

# HFR NUT

# SPRING STOP NUT

January 2017

**Definition:** all metal self-locking nut with metallic insert

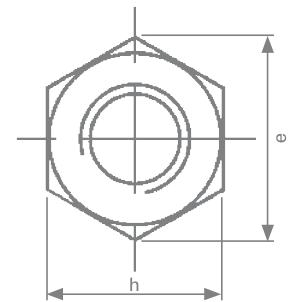
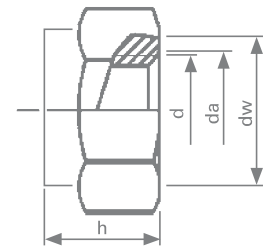
**Threading:** standard to ISO 965-2



d	pitch	da	dw - min.	h	s	E - min.
M 3	0,50	3,00 – 3,45	4,80	2,70 – 3,30	5,32 – 5,50	6,01
M 4	0,70	4,00 – 4,60	5,90	3,50 – 4,10	6,78 – 7,00	7,66
M 5	0,80	5,00 – 5,75	6,90	4,30 – 4,90	7,78 – 8,00	8,79
M 6	1,00	6,00 – 6,75	8,90	4,60 – 5,40	9,78 – 10,00	11,05
M 8	1,25	8,00 – 8,75	11,60	6,90 – 7,70	12,73 – 13,00	14,38
M 10	1,50	10,00 – 10,80	15,60	7,90 – 8,70	16,73 – 17,00	18,90
M 12	1,75	12,00 – 13,00	17,40	10,10 – 10,90	18,67 – 19,00	21,10
M 14	2,00	14,00 – 15,10	20,50	12,00 – 13,00	21,67 – 22,00	24,49
M 16	2,00	16,00 – 17,30	22,50	14,00 – 15,00	23,67 – 24,00	26,75
M 18	2,50	18,00 – 19,50	24,90	15,50 – 16,50	26,16 – 27,00	29,56
M 20	2,50	20,00 – 21,50	27,70	17,00 – 18,00	29,16 – 30,00	32,95

Quality class	Classification	Range of application
Class 5 steel	QF	Self color -50° C +300° C <sup>(1)</sup>
Class 6 steel	QJ	
Stainless steel A2-70	ZE	Corrosive atmosphere -200° C +400° C <sup>(1)</sup>

<sup>(1)</sup> Values are only given as an indication



Surface treatment (standard to ROHS requirements)			
Electroplated Zinc (steel)	Yellow	ZJ	ISO 4042
	Clear Lanthane®	ZL	400 h
	Clear Lanthane® + Topcoat	ZF	600 h

Example of ordering code					
	Type	Diam X Pitch	Class	Protection	
wording classification	SPR	100150	QF	ZL	00
wording	SPR	M10 X 150	Steel	Zinc Lanthane®	*

\* Standard size

**On request:** other materials, plating, sizes, imperial thread